



AL Nasseriah World
Factory Company Ltd.

Since
2006

COMPANY PROFILE

- **Air-Outlets**

- **Duct Accessories**



Jeddah 2^{ed}
Industrial Area



info@ana.com.sa

INNOVATION IS OUR VISION ...

www.ana.com.sa

TABLE OF CONTENTS

ABOUT US	03
FACTORY INSIGHT	04
QUALITY CONTROL	05
PROJECTS & APPROVALS	06
AIR-OUTLETS	07
DUCT ACCESSORIES	11

ABOUT US



Al-Nasseriah world factory company Ltd is a premier manufacturer of air outlets and duct accessories, specializing in high-performance products designed for efficient air distribution in HVAC systems. Established in 2006, we have built a strong reputation for producing durable, reliable, and cost-effective solutions for both commercial and residential applications. From air diffusers and grilles to dampers, sound attenuators, variable air volume, electric duct heaters and accessories, our products are engineered to optimize airflow, enhance system performance, and reduce energy consumption.

Our commitment to innovation, quality, and customer satisfaction has made us a trusted partner for HVAC contractors, engineers, and Our products have been installed in many distinguished governmental and private projects in the Kingdom of Saudi Arabia and several Gulf States as well as other Arab countries. Our products have won many approvals from various sectors, such as health, education, airports and others.

Our Vision:

To be the leading global provider of innovative, high-quality air distribution solutions, enhancing the efficiency, sustainability, and comfort of HVAC systems worldwide. We envision a future where our cutting-edge air outlets, diffusers, grilles, and duct accessories play a key role in shaping smarter, greener, and more energy-efficient buildings—driving both performance and environmental responsibility across industries.

Our Mission:

To provide innovative, high-quality air distribution products that improve system efficiency, air quality, and comfort. We aim to be the leading manufacturer in the HVAC industry, offering solutions that meet the highest standards of quality, performance, and sustainability.



FACTORY INSIGHT

Al-Nasseriah World Factory Company Ltd. **ANA** is a leading manufacturer located in the Second Industrial Area of Jeddah, Saudi Arabia. With branches across the Kingdom - including Riyadh to cover the central and northern region, Dammam to cover the eastern region, and Jeddah branch to cover the western, southern, and Tabouk region. **Wherever your projects are, we're just hours away.**



Our strength lies in the balance between **highly skilled manpower, modern machinery, and professional expertise.** With experienced managers, engineers, and technical specialists, ANA ensures precision and innovation in every product.

Our production facilities are equipped with advanced machinery, including:

- Plasma CNC cutting machines
- A wide range of folding and bending machines
- Powder coating synchronization lines, among the fastest and most accurate in the industry



Quality Control

At **Al-Nasseriah World Factory Company Ltd. (ANA)**, quality is not just a requirement it is a promise we deliver on every project. We understand that consultants, contractors, and end-users rely on products that perform with consistency, safety, and durability. That is why we have invested heavily in a world-class quality management system, ensuring every product that leaves our factory meets both **Saudi standards** and the most demanding **international benchmarks**.

Certified Quality, Trusted Performance.

Our commitment to excellence is backed by globally recognized certifications and memberships, proving our products are tested, trusted, and built to last:

- **ISO 9001:2015**
- **ISO 14001:2015**
- **ISO 45001:2018**
- **UL 555** – Fire dampers certified
- **AMCA Membership**
- **Intertek Testing** – of our air outlets in accordance with:
 - ASHRAE 70-2006
 - ASTM E477-20
- **Sound Attenuators** – Tested to ASTM E477:2020
- **Variable Air Volume (VAV) Units** – Certified according to AHRI Standard 880-2017



May 2025
Member Since

Ra. Falt
Executive Director

Projects & Approvals

Over the years, **Al-Nasseriah World Factory Company Ltd. (ANA)** has earned the trust of leading developers, government authorities, and private sector clients by consistently delivering high-quality HVAC solutions. Our proven track record and commitment to excellence have secured us a place on the **approved vendor lists of major organizations** across the Kingdom of Saudi Arabia.

We are proudly listed as an approved vendor with:

- NEOM
- Red Sea Global
- Saudi Aramco
- National Water Company (NWC)
- Royal Commission for Riyadh City (RCRC)
- General Entertainment Authority (GEA)
- Diriyah Gate Development Authority (DGDA)
- Qiddiya Investment Company (QIC)
- Roshn Real Estate (RSG)
- And many more leading institutions and authorities.

In addition to our approvals, ANA has successfully supplied HVAC solutions to some of the Kingdom's landmark projects, including:



AIR-OUTLETS

Our air outlets are designed with precision engineering to ensure optimal airflow, quiet performance, and lasting comfort. By combining innovation with functionality, we deliver solutions that enhance indoor environments and redefine the standards of air distribution.



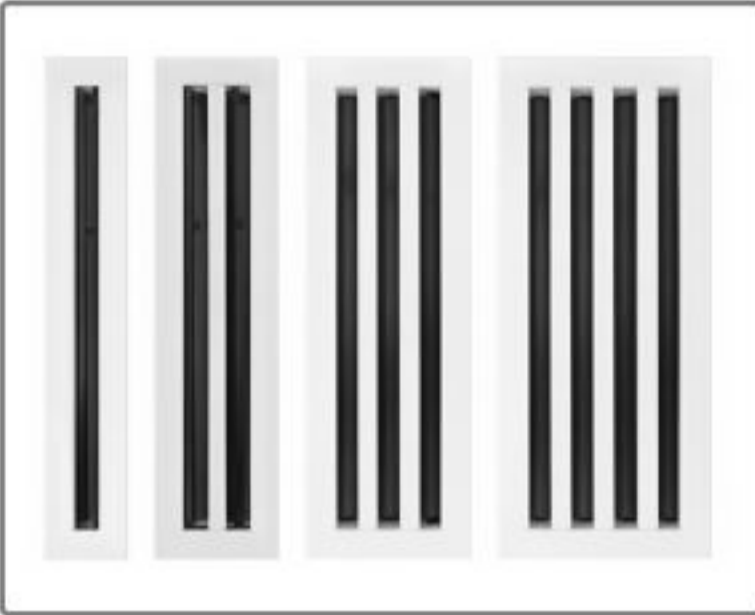
ANA



ANA - NCD

Square & Rectangular Ceiling Diffusers

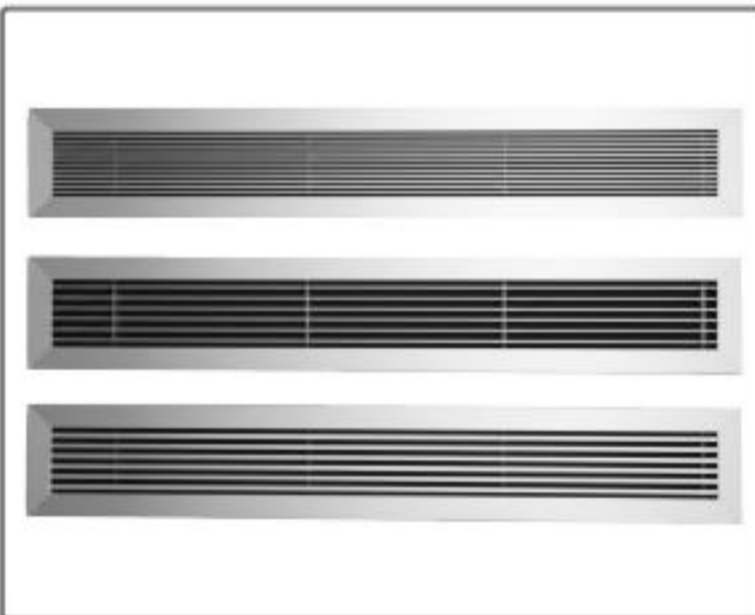
- Designed for Ceiling applications.
- Suitable for Direct Duct mounting, False Ceiling, and Ceiling Tiles.
- Single or Multiple air-ways distribution.
- Horizontal air spread with Vertical throw.



ANA - NLSD

Linear Slot Diffusers

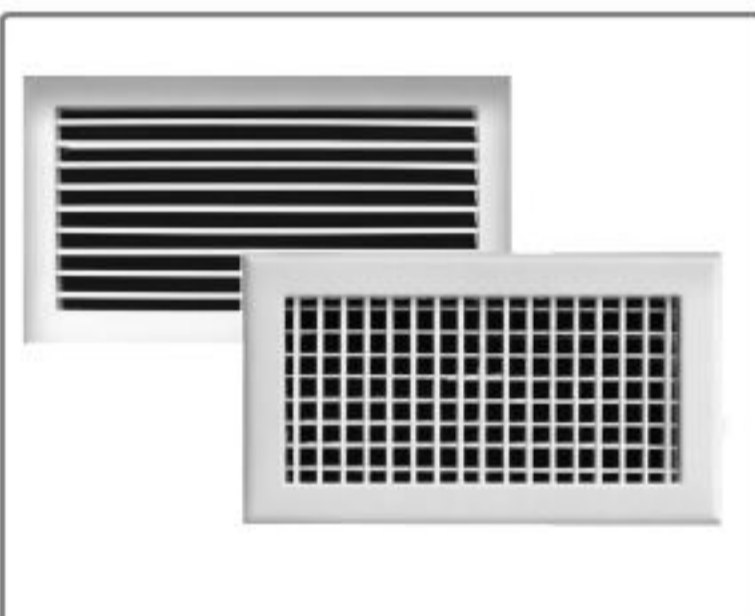
- Designed for Ceiling applications.
- Suitable for Corridors, Open Areas.
- Single or Multiple slots.
- Horizontal air spread with Vertical throw.



ANA - NLBG

Linear Bar Grilles

- Designed for Wall applications.
- Suitable for Corridors, Open Offices, and In-Bulkhead.
- Horizontal air spread and throw.



ANA - NSAG/R + NRAG/R + NFBAG/R

Linear Bar Grilles

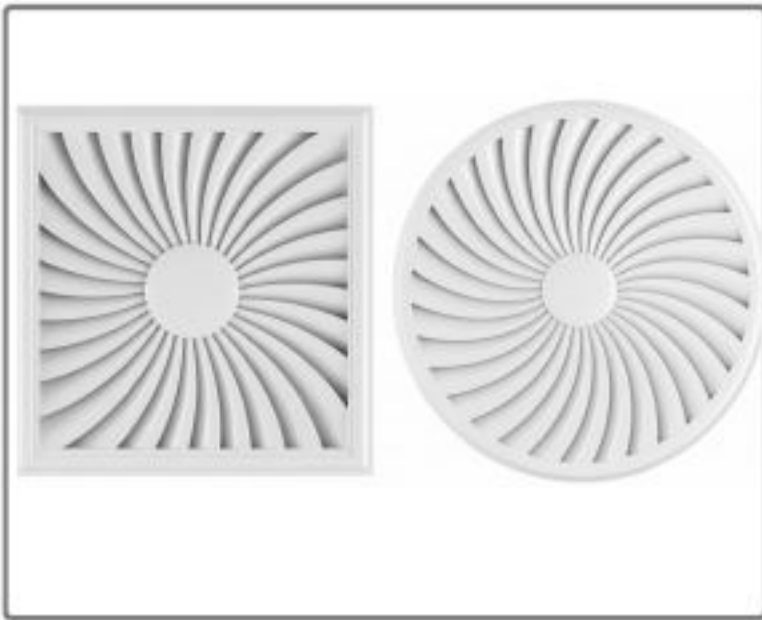
- Designed for Side throw applications.
- Suitable for Basements, and for Exposed Ducts.
- Adjustable front and rear blades.
- Horizontal air throw with controllable spread.



ANA - NFBD

Flow Bar Diffusers

- Designed for Ceiling applications with Hiding features.
- Suitable for False ceiling, High ceiling applications.
- Hidden behind the false ceiling.
- Single or Multiple slots.
- Vertical air throw with slight horizontal spread control.



ANA - NSW

Swirl Diffusers

- Designed for Ceiling applications.
- Suitable for Direct Plenum mounting, and Ceiling Tiles.
- Radial or Slot Pattern.
- Round or Square neck.
- Vortex Air Spread, and Vertical throw.



ANA - NMSWD

Motorized Swirl Diffuser

- Designed for High Ceiling applications.
- Suitable for Open Areas, High Ceiling Areas such as Museums...etc
- Modulating or on/off actuator options.
- Vertical throw, Wide Vortex spread



ANA - NRCD

Round Ceiling Diffusers

- Designed for Ceiling applications.
- Suitable for Direct duct mounting, exposed ducts ,and Open areas.
- Round air spread and Vertical throw.



ANA - NJD/P + NJN/P + NDJD

Jet Nozzle Diffusers

- Designed for High Ceiling applications.
- Suitable for Airports, Stadiums, High Ceiling, and open Areas.
- Reaches 99% free area.
- Adjustable direction of air spread and throw.



ANA - NDV

Disc Valves

- Designed for Exhaust applications.
- Suitable for Bathrooms, Exhaust ducts, and ventilation.
- Variable disc positions.
- Low sound levels even under heavy air volume.



ANA - NFAL/U + NSTL/U

Sand Trap & Exhaust Louvers

- Designed for Air Intake & Exhaust applications.
- Suitable for Exterior walls, Generator Rooms, and for Intake & Exhaust ducts.
- Available with unit construction of Filters, and Dampers.
- Aluminum & Steel Constructions.



ANA - NPHL

Pent House Louvers

- Designed for Roof & Exterior applications.
- Suitable for Generator Rooms, Roof Machines, and Air-Shafts.
- Available with Sand Trap blades & Exhaust Louver blades.
- One or multiple Side wall construction, or Full Construction.



ANA - NDG/L

Door Louvers

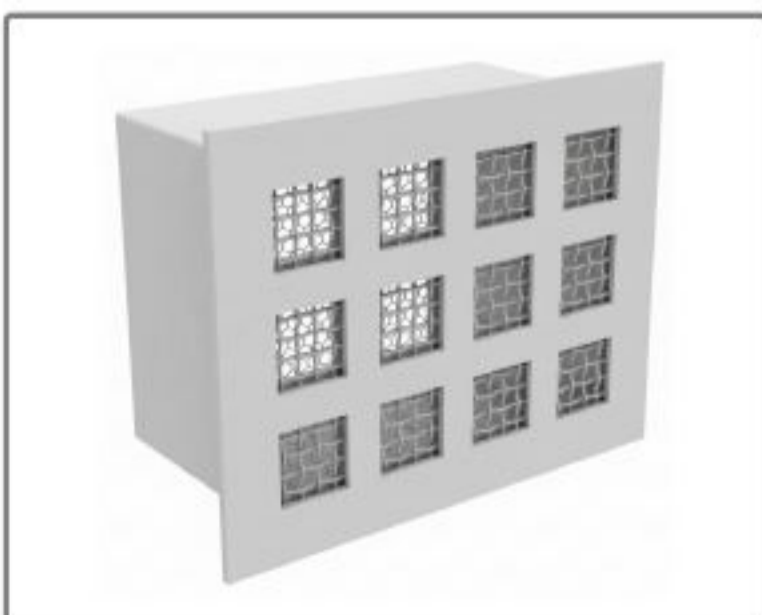
- Designed for Door Ventilation.
- Suitable for All types of Doors.
- Available with Louver Blades & Grille Blades.



ANA - NFDL/-M

Fire Door Louver

- Designed for Door Ventilation with Fire resistance.
- Suitable for Fire rated Doors.
- Mechanical or Motorized operation.



ANA - NUSG-L/-P

Security Grilles & Registers

- Designed for Ultimate Security Air Supply & Ventilation.
- Suitable for Detention Centers, Prisons & Jails.
- Available with Lattice & Perforation grilles.
- Steel Construction.



ANA - NVAV-PI/-CAV/-BP

Variable & Constant Air Volume

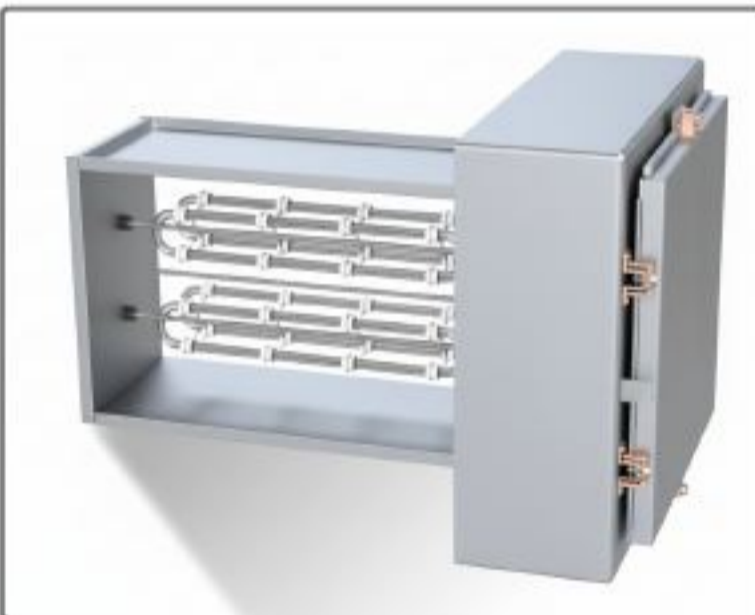
- Designed to deliver the right amount of conditioned air for each zone.
- Suitable for Constant & Variable fan speed systems.
- Quiet, well-insulated, and energy efficient.
- Heater or silencer optional.



ANA - NSA-R/-B/-C/-CT

Sound Attenuator

- Designed to reduce airborne noise.
- Suitable for Main Ducts, Generator Rooms, and between zones.
- Rectangular, Round or bent in an angle construction.



ANA - NEDH-F/-S

Electric Duct Heater

- Designed to reheat the air passing to the zone.
- Suitable for Main ducts, and Branches.
- Flange Fixed in between ducts, or Slipped in-duct opening.



ANA - NAL

Acoustic Louver

- Designed to ensure smooth air intake and noise reduction.
- Suitable for Generator Rooms, and Zone noise isolation.
- Sloped and V-configured blades to minimize water and sand ingress.
- Various depths and insulation types.



ANA - NLFU

Laminar Flow Unit

- Designed to Supply laminar filtered airflow.
- Suitable for Surgery Rooms, Hospitals, Sterile Rooms, and Clinics.
- Stainless Steel Construction.
- Available with HEPA & ULPA filters with various thicknesses.
- Available with Rubber Insulation.



ANA - NVCD F/C/S/O/R

Volume Control Dampers

- Designed to control airvolume entering each branch.
- Suitable for Main Ducts to cut-off the supply, and Branch Ducts for balancing.
- Available with multiple types of connections (Flange / C&S / with adaptor ...etc).
- Available with rectangular & round construction.



ANA - NVCD-M

Motorized Volume Control Damper

- Designed to control airvolume entering each branch.
- Motorized Operation, controled by BMS and/or external switch.
- On/off damper actuator.
- Available with multiple types of connections (Flange / C&S / with adaptor ...etc).



ANA - AF-CFD + AF-CFD I/S/O

Fire Damper

- Designed to block fire spread through HVAC ducts.
- Suitable for In-between zones, Air shafts, Risers, and A/C units.
- Curtain Type Blades, with stainless steel closing spring, and mechanical fusible link breaks at 74°C/ 165°F.



ANA - NMFSD-F/-S/-C&S/-D

Combination Fire & Smoke Dampers

- Designed to block fire & smoke spread through HVAC ducts.
- Suitable for Generator Rooms, Fire Rated walls, and A/C units.
- Actuator is controlled by UL listed electronic fusible link, or connected directly to fire alarm system.
- Stainless steel jamb seal to prevent smoke leakage & bronze bushings for blades movement.



ANA - NGRD + NBDD + NPRD

Non Return Dampers

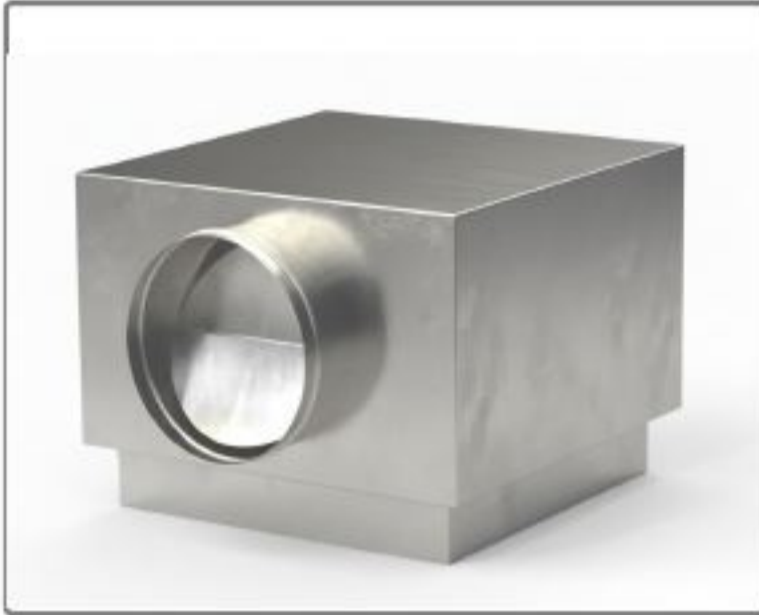
- Designed to allow air to flow in one direction.
- Suitable for Staircase, Exhaust Fans, stopping reverse flow inside ducts.
- Aluminum or steel blades depending on the required opening pressure.
- Operatable by Gravity, Spring, or Counter Weight.



ANA - NFDU

Fire Damper Unit

- Designed to allow the passage of air while blocking fire spread.
- Suitable for Kitchens, Restrooms, Exhaust ducts, Exhaust Fans.
- Consists of a sleeve containing a fire damper, with a grille or louver at the inlet.



ANA - NPB LB/LS/CD

Plenum Box

- Designed to connect the flexible duct to the air-outlet.
- Redistribute the air before spreading it over the air-outlet, and also reduces airborne noise.
- Available with damper (spigot) at inlet.
- Well-Insulated with fiberglass or rubber.



ANA - NDD

Displacement Diffuser

- Designed for ground level discharge, enduring heavy loads and harsh conditions.
- Stainless Steel or heavy gauge Steel construction.
- Various patterns available.



ANA - NDAD

Duct Access Door

- Designed to allow access to the duct for maintenance.
- Suitable for Steel Ducts.
- Available with hinges and/or camlocks
- Available with any type of insulation.



ANA - NAF

Air Filters

- Designed to purify airflow, protect from sand particles, microbes, germs, and any unwanted particles.
- Suitable for Machines Air-Intake, Sterile Rooms, Surgery Rooms, and Generator Rooms.
- Available, HEPA filter, ULPA filter, Aluminum washable filter, and Bag Filters.

ANA

AL Nasseriah World Factory Company Ltd.

Western Region

Tel: +966 (53) 969 6878
Email: Western@ana.com.sa

Central Region

Tel: +966 (53) 969 6269
Email: Central@ana.com.sa

Eastern Region

Tel: +966 (59) 370 5349
Email: Eastern@ana.com.sa

Head Office

Tel: +966 (55) 900 5843
Email: FactoryHO@ana.com.sa

